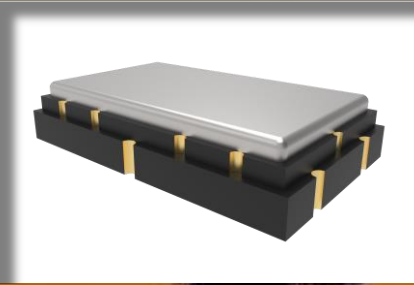


FEATURES

- ✓ Extended operating range (-30° to 80°C)
- ✓ SMD Construction
- ✓ 7x11.4mm Package
- ✓ ROHS Compliant



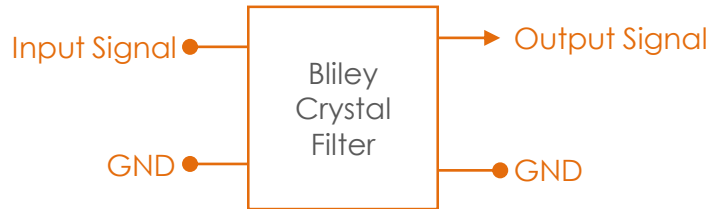
Monolithic Crystal Filter

#blileytakesyoufurther

Description

Bliley Crystal Filters are designed to perform reliably under demanding environmental conditions. Bliley rigorous Quality Control Standards provides the framework to provide consistent lot to lot product performance. Bliley Crystal Filters are utilized in applications consisting of: Avionics, Instrumentation, Military, SATCOM and DATACOM. Bliley can provide both discrete and monolithic topology solutions.

Block Diagram



Part Number Configuration

BXFMSK – 21M4 – BTCT

Center Frequency 21.4MHz	Bandwidth B: ±7.5MHz	Operating Temperature T: -30°C to +80°C	Termination Impedance C: Natural Impedance
------------------------------------	--------------------------------	---	--

Performance Specifications

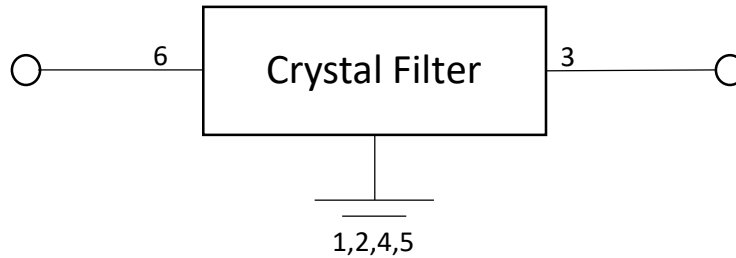
Parameter	Conditions	Values			Unit
		MIN	TYP	MAX	
General		MIN	TYP	MAX	
Center Frequency	Fundamental, 4-pole		21.4		MHz
Bandwidth	@3dB	±7.5			kHz
Amplitude Ripple	F0±4.5kHz			1.0	dB
Insertion Loss	In passband			2.0	dB
Intermodulation				-100	dBm
Stop Band	@35dB		±20		kHz
Attenuation	@40dB		±25		kHz
Input Level			-20		dBm
Input Power		0	6	10	dBm
Natural Impedance		1500Ω//1.2pF			

Environmental Compliance

Parameter	Conditions	Values			Unit
		MIN	TYP	MAX	
Operating Temp Range		-30		+80	°C
Storage Temp Range		-50		+95	°C

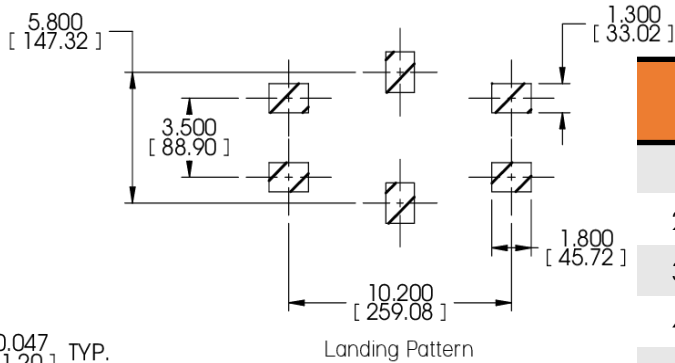
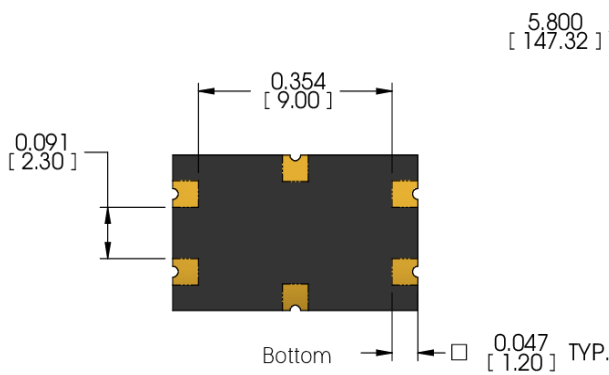
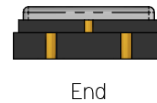
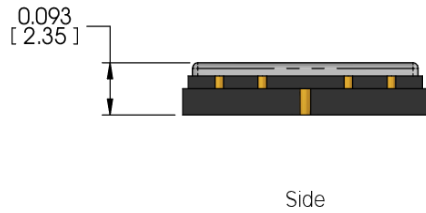
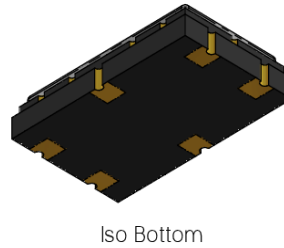
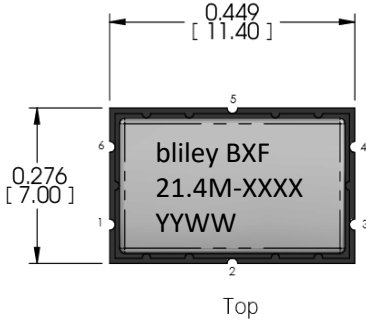
Measurement Circuit

Network Analyzer



DISCLAIMER: All changes to the product(s) and or information contained herein are subject to Bliley Technologies' Product Change Notification process. No liability is assumed as a result of their use or application. No intellectual property rights accompany the sale or delivery of any such product(s) or information.

Physical Specifications



Pin Connections	
1	Ground
2	Ground
3	Output
4	Ground
5	Ground
6	Input

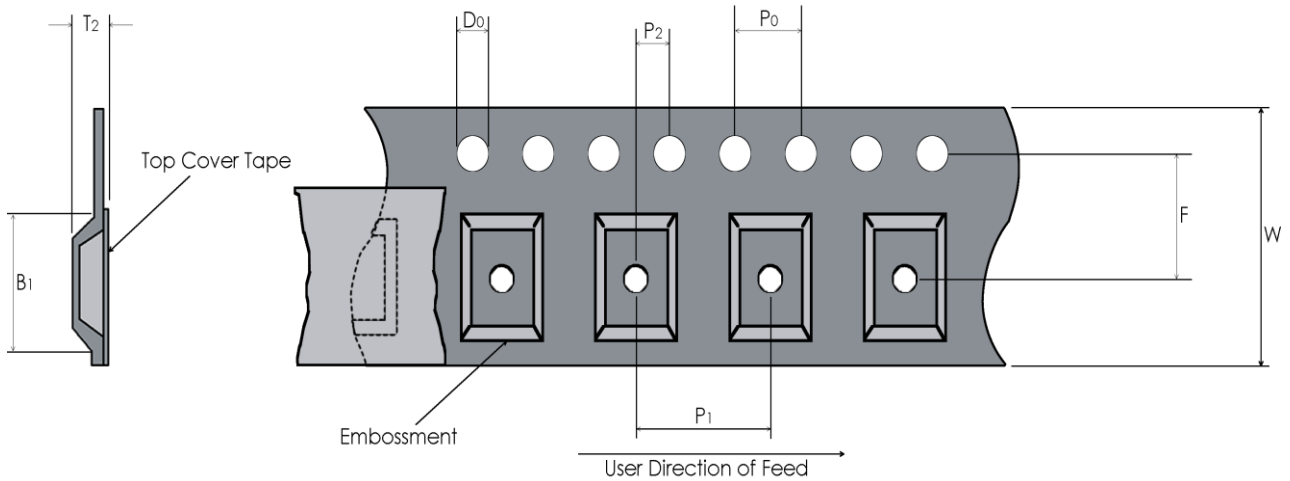
Tolerances (mm) .X = ± 0.5, .XX = ± 0.2 unless otherwise specified

Notes:

DISCLAIMER: All changes to the product(s) and or information contained herein are subject to Bliley Technologies' Product Change Notification process. No liability is assumed as a result of their use or application. No intellectual property rights accompany the sale or delivery of any such product(s) or information.

Tape and Reel

Embossed Carrier Dimensions (8mm, 12mm, 16mm, 24mm Tape Only)



Tape Dimensions (mm)				Reel Dimensions (mm)					
W	F	Do	Po	P1	P2	B1	T2	Outside Dia.	Parts / Reel
TBD	7.5	1.5	4	8	2	TBD	1.8	TBD	1000

Recommended Reflow Profile

Reflow Profile: in accordance to IPC/JEDEC J-STD-020 (Latest Revision)

Additional Notes:

- This part has been designed for pick and place reflow soldering
- This part may be reflowed once
- This part should not be reflowed in the inverted position

Packaging

Packaging: All packaging must conform to ESD Controls detailed in ANSI/ESD S20.20 (Latest Revision)